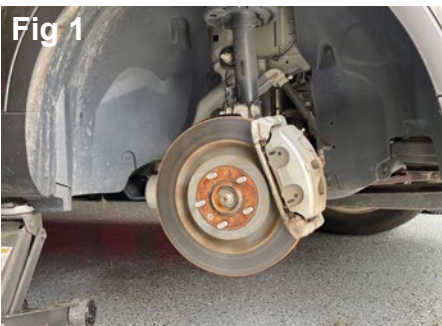


# | GUNIWHEEL™ 45S

Please read installation instructions carefully before using.



1

- Before installation, make sure the hub/rotor is securely attached to the vehicle and free of any damage.



2

- Align the GUNIWHEEL™ 45S with the lug pattern of the vehicle. Lug nut and bolt assemblies vary by the vehicle manufacturer.
- Place the GUNIWHEEL™ 45S flush against the hub/rotor. (see Fig 2)



3

- Optional GUNIWASHERS are included.
- GUNIWASHERS are not required for installation but are recommended to prevent over-tightening lug nuts/bolts and reduce damage to the powder coating surface of the GUNIWHEEL™ 45S (see Fig 3)
- Additional GUNIWASHER packs are available online at [GUNIWHEEL.COM](http://GUNIWHEEL.COM) or from your local distributor.



4

- Insert the OEM lug nuts or bolts and tighten halfway to snug. (see Fig 4)
- Most OEM lug nuts or bolts fit GUNIWHEEL™ 45S
- There are GUNINUT and GUNIBOLT packs available online at [GUNIWHEEL.COM](http://GUNIWHEEL.COM) or from your local distributor.



5

- Torque the lug nuts/bolts to 50 lbs max torque. Do not overtighten as this may damage to the lug pattern.
- If there is any noticeable movement of the GUNIWHEEL™ 45S once the lug nuts or bolts are tightened to 50 lbs max torque then the installation is not correct and should be remounted.
- Motorized use of a vehicle with the GUNIWHEEL™ 45S has a max speed limit of 5mph/8kmh.